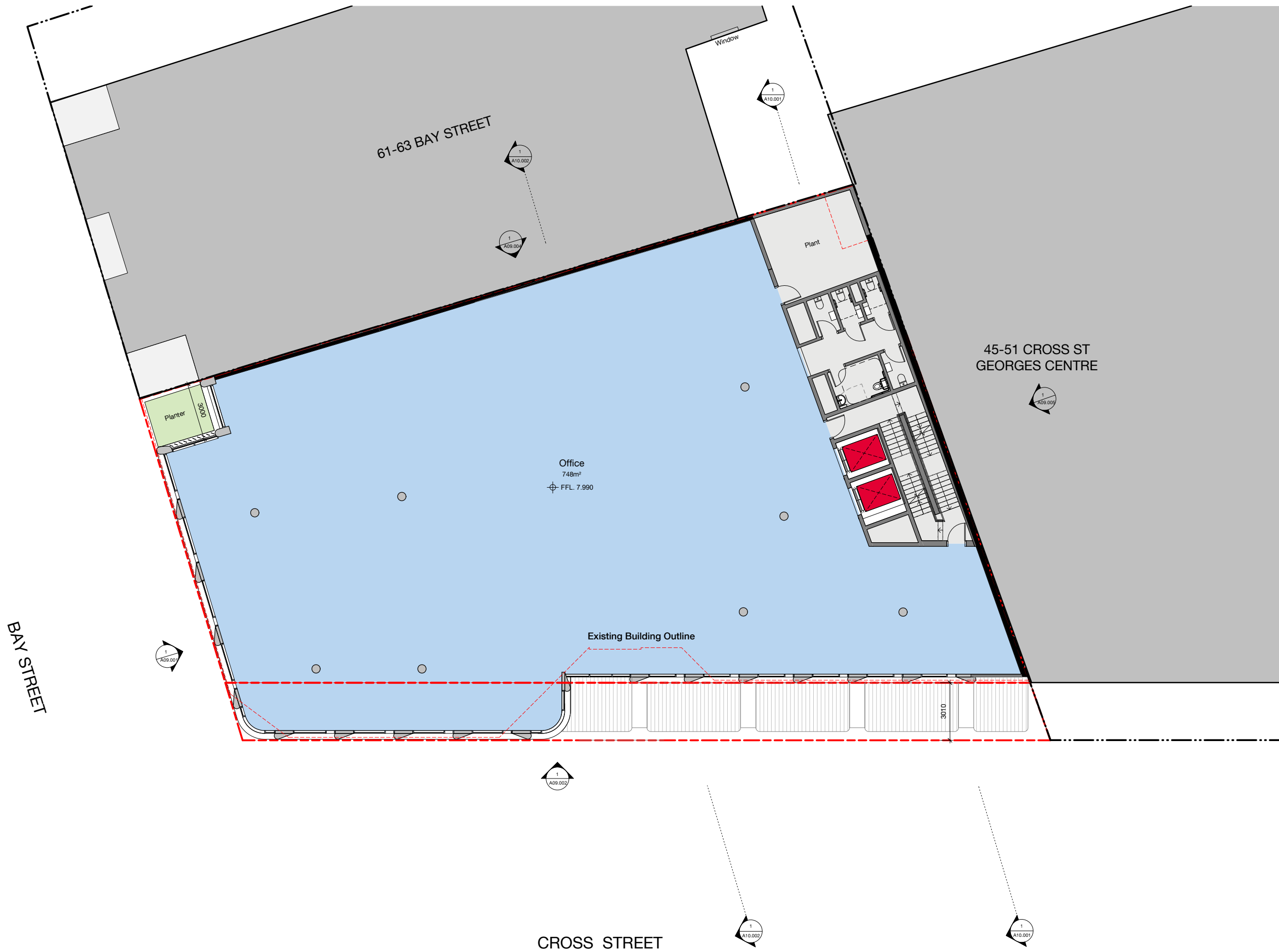


Do not scale drawings - refer to figured dimensions only. Any discrepancies shall immediately be referred to the architect for clarification.



Ground Floor Plan

c:\temp\53CROSSST_BS_ARCH_R2020_2am.rvt



Check all dimensions and site conditions prior to commencement of any work, the purchase or ordering of any materials, fittings, plant, services or equipment and the preparation of shop drawings and or the fabrication of any components.

Do not scale drawings - refer to figured dimensions only. Any discrepancies shall immediately be referred to the architect for clarification.

All drawings may not be reproduced or distributed without prior permission from the architect.

11	02.02.22	For Information		
7	16.11.21	For Information		
6	15.11.21	For Review		
5	10.11.21	For Information		
3	13.09.21	For Information		
1	10.02.21	Development Application	Initial	Checked

53 Cross Street Double Bay

Level 01 Floor Plan

Status	FOR INFORMATION		
Scale	1 : 100	@ A1	
Drawn	NS	Checked	MH
Project No.	S12438		
Plot Date	2/02/2022 11:32:27 AM		

BIM

Drawing no.	Revision
A03.101	11

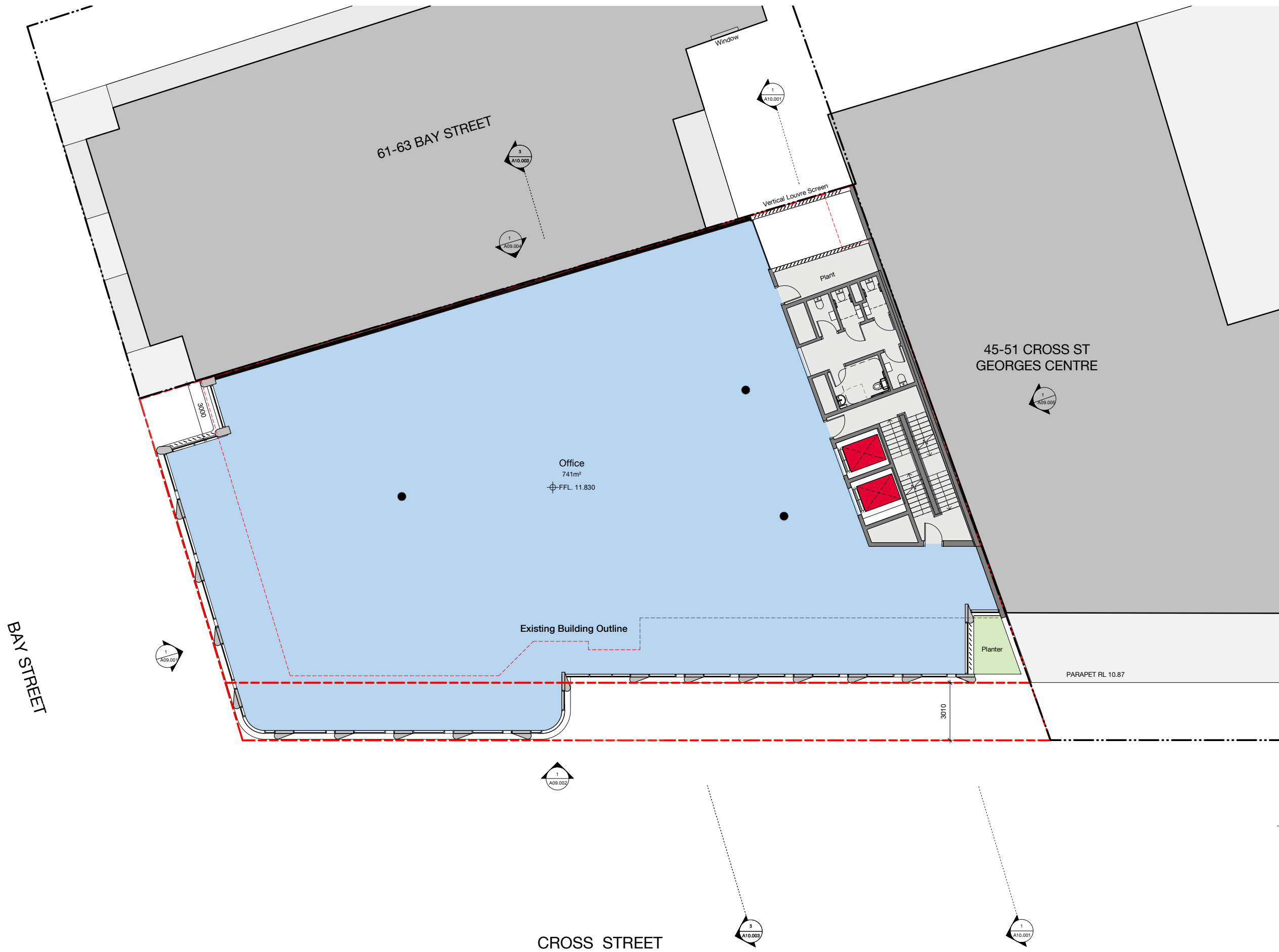
Melbourne 1 Nicholson Street
Melbourne VIC 3000 Australia
T 03 8664 6200 F 03 8664 6300
email mel@batesmart.com.au
http://www.batesmart.com.au

Sydney 43 Brisbane Street
Surry Hills NSW 2010 Australia
T 02 8354 5100 F 02 8354 5199
email syd@batesmart.com.au
http://www.batesmart.com.au

Bates Smart Pty Ltd ABN 70 004 999 400

BATESSMART

c:\temp\53CROSSST_BS_ARCH_R2020_2am.rvt



Check all dimensions and site conditions prior to commencement of any work, the purchase or ordering of any materials, fittings, plant, services or equipment and the preparation of shop drawings and or the fabrication of any components.

Do not scale drawings - refer to figured dimensions only. Any discrepancies shall immediately be referred to the architect for clarification.

All drawings may not be reproduced or distributed without prior permission from the architect.

11	02.02.22	For Information		
7	16.11.21	For Information		
6	15.11.21	For Review		
5	10.11.21	For Information		
3	13.09.21	For Information		
1	10.02.21	Development Application	Initial	Checked
Rev	Date	Description	Application	

53 Cross Street
Double Bay

Level 02 Floor Plan



Status	FOR INFORMATION		
Scale	1 : 100	@	A1
Drawn	NS	Checked	MH
Project No.	S12438		
Plot Date	2/02/2022 11:32:39 AM		
BIM			

Drawing no.	Revision
A03.102	11

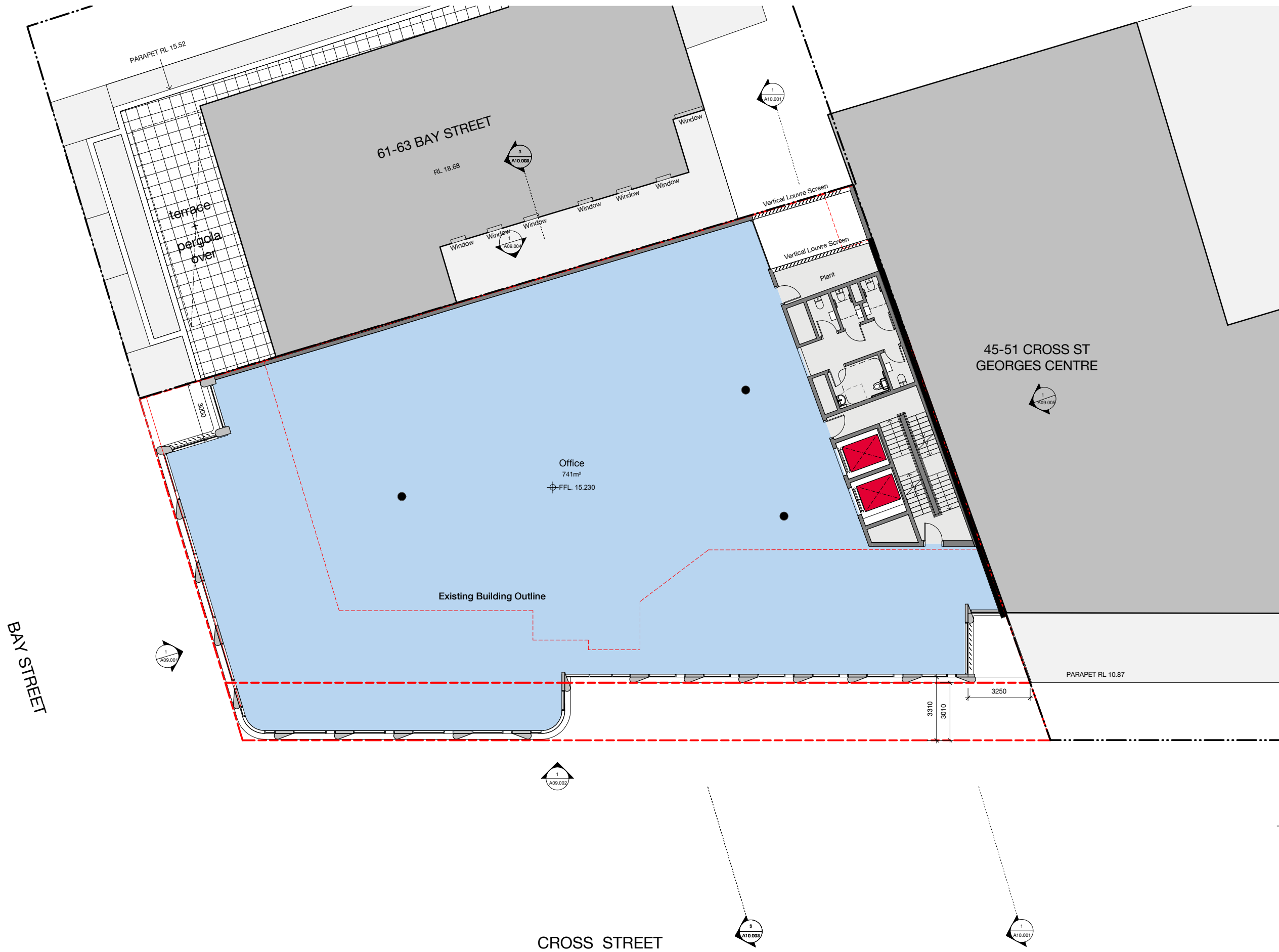
Melbourne 1 Nicholson Street
Melbourne VIC 3000 Australia
T 03 8664 6200 F 03 8664 6300
email mel@batesmart.com.au
http://www.batesmart.com.au

Sydney 43 Brisbane Street
Surry Hills NSW 2010 Australia
T 02 8354 5100 F 02 8354 5199
email syd@batesmart.com.au
http://www.batesmart.com.au

Bates Smart Pty Ltd ABN 70 004 999 400

BATESSMART

c:\temp\53CROSSST_BS_ARCH_R2020_3am.rvt



Check all dimensions and site conditions prior to commencement of any work, the purchase or ordering of any materials, fittings, plant, services or equipment and the preparation of shop drawings and or the fabrication of any components.

Do not scale drawings - refer to figured dimensions only. Any discrepancies shall immediately be referred to the architect for clarification.

All drawings may not be reproduced or distributed without prior permission from the architect.

11	02.02.22	For Information		
7	16.11.21	For Information		
6	15.11.21	For Review		
5	10.11.21	For Information		
3	13.09.21	For Information		
1	10.02.21	Development Application	Initial	Checked
Rev	Date	Description	Application	

53 Cross Street
Double Bay

Level 03 Floor Plan

Status	FOR INFORMATION		
Scale	1 : 100	@	A1
Drawn	NS	Checked	MH
Project No.	S12438		
Plot Date	2/02/2022 11:34:55 AM		

BIM	
Drawing no.	Revision
A03.103	11

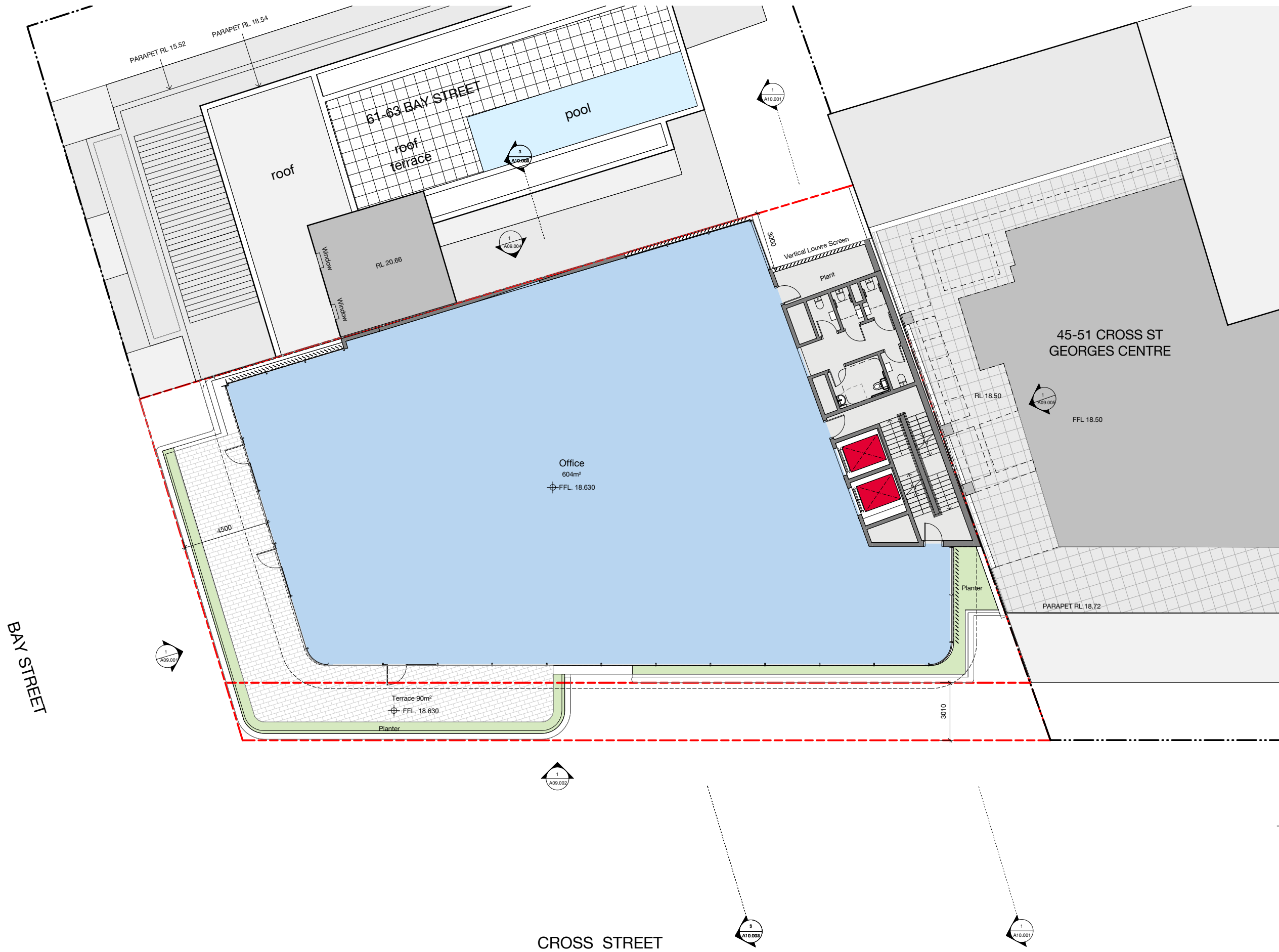
Melbourne 1 Nicholson Street
Melbourne VIC 3000 Australia
T 03 8664 6200 F 03 8664 6300
email mel@batesmart.com.au
http://www.batesmart.com.au

Sydney 43 Brisbane Street
Surry Hills NSW 2010 Australia
T 02 8354 5100 F 02 8354 5199
email syd@batesmart.com.au
http://www.batesmart.com.au

Bates Smart Pty Ltd ABN 70 004 999 400

BATESSMART

c:\temp\53CROSSST_BS_ARCH_R2020_2.mxd



Check all dimensions and site conditions prior to commencement of any work, the purchase or ordering of any materials, fittings, plant, services or equipment and the preparation of shop drawings and or the fabrication of any components.

Do not scale drawings - refer to figured dimensions only. Any discrepancies shall immediately be referred to the architect for clarification.

All drawings may not be reproduced or distributed without prior permission from the architect.

11	02.02.22	For Information		
7	16.11.21	For Information		
6	15.11.21	For Review		
5	10.11.21	For Information		
3	13.09.21	For Information		
1	10.02.21	Development Application	Initial	Checked
Rev	Date	Description		

53 Cross Street Double Bay

Level 04 Floor Plan

Status	FOR INFORMATION		
Scale	1 : 100	@ A1	
Drawn	NS	Checked	MH
Project No.	S12438		
Plot Date	2/02/2022 11:35:15 AM		

BIM

Drawing no.	Revision
A03.104	11

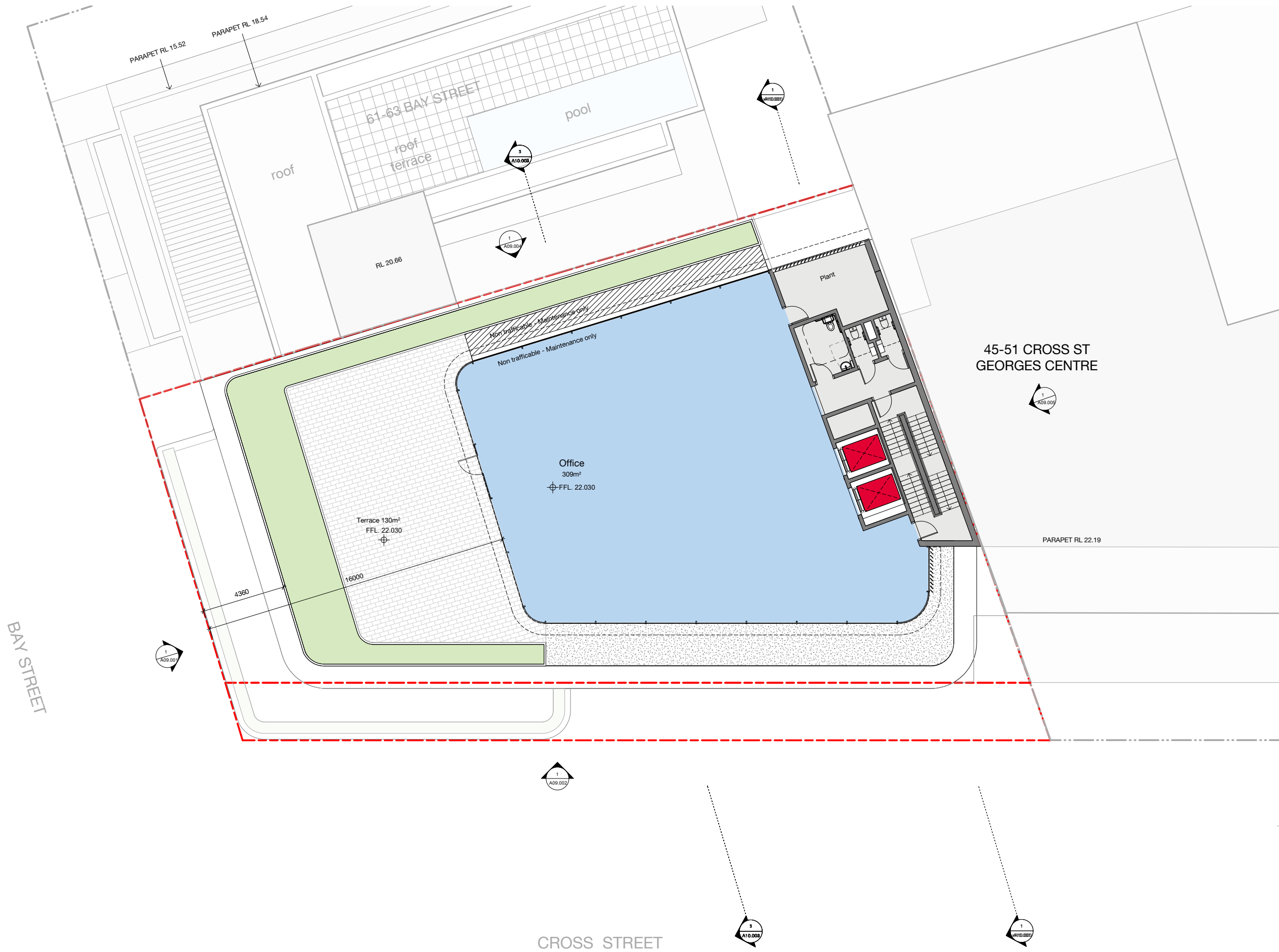
Melbourne 1 Nicholson Street
Melbourne VIC 3000 Australia
T 03 8664 6200 F 03 8664 6300
email mel@batesmart.com.au
http://www.batesmart.com.au

Sydney 43 Brisbane Street
Surry Hills NSW 2010 Australia
T 02 8354 5100 F 02 8354 5199
email syd@batesmart.com.au
http://www.batesmart.com.au

Bates Smart Pty Ltd ABN 70 004 999 400

BATESSMART

c:\temp\53CROSSST_BS_ARCH_R2020_2am.rvt



Check all dimensions and site conditions prior to commencement of any work, the purchase or ordering of any materials, fittings, plant, services or equipment and the preparation of shop drawings and or the fabrication of any components.

Do not scale drawings - refer to figured dimensions only. Any discrepancies shall immediately be referred to the architect for clarification.

All drawings may not be reproduced or distributed without prior permission from the architect.

11	02.02.22	For Information		
7	16.11.21	For Information		
6	15.11.21	For Review		
5	10.11.21	For Information		
3	13.09.21	For Information		
1	10.02.21	Development Application	Initial	Checked
Rev	Date	Description		

53 Cross Street Double Bay

Level 05 Floor Plan

Status	FOR INFORMATION		
Scale	1 : 100	@	A1
Drawn	NS	Checked	MH
Project No.	S12438		
Plot Date	2/02/2022 11:37:04 AM		

BIM

Drawing no.	Revision
A03.105	11

Melbourne 1 Nicholson Street
Melbourne VIC 3000 Australia
T 03 8664 6200 F 03 8664 6300
email mel@batesmart.com.au
http://www.batesmart.com.au

Sydney 43 Brisbane Street
Surry Hills NSW 2010 Australia
T 02 8354 5100 F 02 8354 5199
email syd@batesmart.com.au
http://www.batesmart.com.au

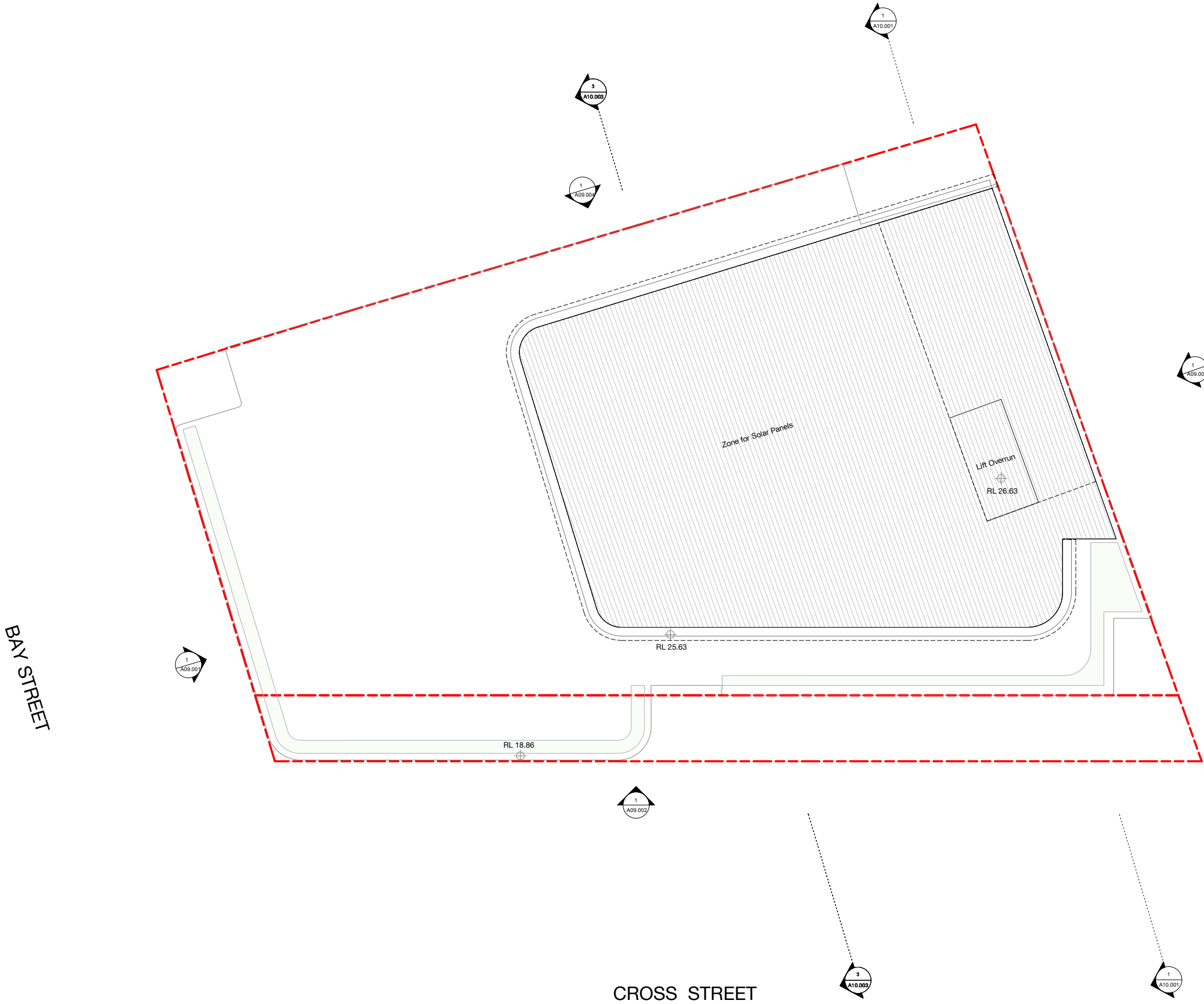
Bates Smart Pty Ltd ABN 70 004 999 400

BATESSMART

Check all dimensions and site conditions prior to commencement of any work, the purchase or ordering of any materials, fittings, plant, services or equipment and the preparation of shop drawings and or the fabrication of any components.

Do not scale drawings - refer to figured dimensions only. Any discrepancies shall immediately be referred to the architect for clarification.

All drawings may not be reproduced or distributed without prior permission from the architect.



11	02.02.22	For Information		
7	16.11.21	For Information		
1	10.02.21	Development Application		
Rev	Date	Description	Initial	Checked

53 Cross Street
Double Bay

Roof Plan



Status	FOR INFORMATION		
Scale	1 : 100	@	A1
Drawn	NS	Checked	MH
Project No.	S12438		
Plot Date	2/02/2022 11:37:25 AM		

BIM

Drawing no.	Revision
A03.106	11

Melbourne 1 Nicholson Street
Melbourne VIC 3000 Australia
T 03 8664 6200 F 03 8664 6300
email mel@batesmart.com.au
http://www.batesmart.com.au

Sydney 43 Brisbane Street
Surry Hills NSW 2010 Australia
T 02 8354 5100 F 02 8354 5199
email syd@batesmart.com.au
http://www.batesmart.com.au

Bates Smart Pty Ltd ABN 70 004 999 400

BATESSMART™

Check all dimensions and site conditions prior to commencement of any work, the purchase or ordering of any materials, fittings, plant, services or equipment and the preparation of shop drawings and or the fabrication of any components.

Do not scale drawings - refer to figured dimensions only. Any discrepancies shall immediately be referred to the architect for clarification.

All drawings may not be reproduced or distributed without prior permission from the architect.



11	02.02.22	For Information		
10	25.01.22	Updated to address contentions		
7	16.11.21	For Information		
6	15.11.21	For Review		
5	10.11.21	For Information		
3	13.09.21	For Information		
2	24.02.21	RFI		
1	10.02.21	Development Application		
Rev	Date	Description	Initial	Checked

53 Cross Street Double Bay

Basement 01 Plan

Status	FOR INFORMATION		
Scale	1 : 100	@ A1	
Drawn	NS	Checked	MH
Project No.	S12438		
Plot Date	2/02/2022 11:37:36 AM		
BIM			
Drawing no.	A03.B01		Revision
			11

Melbourne 1 Nicholson Street
Melbourne VIC 3000 Australia
T 03 8664 6200 F 03 8664 6300
email mel@batesmart.com.au
http://www.batesmart.com.au

Sydney 43 Brisbane Street
Surry Hills NSW 2010 Australia
T 02 8354 5100 F 02 8354 5199
email syd@batesmart.com.au
http://www.batesmart.com.au

Bates Smart Pty Ltd ABN 70 004 999 400

BATESSMART

Check all dimensions and site conditions prior to commencement of any work, the purchase or ordering of any materials, fittings, plant, services or equipment and the preparation of shop drawings and or the fabrication of any components.

Do not scale drawings - refer to figured dimensions only. Any discrepancies shall immediately be referred to the architect for clarification.

All drawings may not be reproduced or distributed without prior permission from the architect.



11	02.02.22	For Information		
10	25.01.22	Updated to address contentions		
7	16.11.21	For Information		
6	15.11.21	For Review		
5	10.11.21	For Information		
3	13.09.21	For Information		
2	24.02.21	RFI		
1	10.02.21	Development Application		
Rev	Date	Description	Initial	Checked

53 Cross Street Double Bay

Basement 02 Plan

Status	FOR INFORMATION		
Scale	1 : 100	@ A1	
Drawn	NS	Checked	MH
Project No.	S12438		
Plot Date	2/02/2022 11:37:46 AM		
BIM			
Drawing no.	A03.B02		Revision
	11		

Melbourne 1 Nicholson Street
Melbourne VIC 3000 Australia
T 03 8664 6200 F 03 8664 6300
email mel@batesmart.com.au
http://www.batesmart.com.au

Sydney 43 Brisbane Street
Surry Hills NSW 2010 Australia
T 02 8354 5100 F 02 8354 5199
email syd@batesmart.com.au
http://www.batesmart.com.au

Bates Smart Pty Ltd ABN 70 004 999 400

BATESSMART

FT-01 \ Facade Type 01: Retail Facade Ground Level

- \ Vertical Columns: Polished white pigment precast concrete
- \ Horizontal Beams: Polished white pigment precast concrete
- \ Glazing: 'Crystal Grey' Double glazed unit
- \ Shopfronts: Warm 'champagne' powdercoated aluminium

FT-02 \ Facade Type 02: Commercial Facade Levels 1-3

- \ Columns: Polished white pigment precast panels
- \ Horizontal Beams: Polished white pigment precast concrete
- \ Glazing: 'Crystal Grey' Double glazed unit
- \ Vertical Panels: Warm 'champagne' powdercoated aluminium rods with operable panel

FT-03 \ Facade Type 03: Commercial Facade Levels 4-5

- \ Glazing: 'Crystal Grey' Double glazed unit
- \ Roof: Warm 'champagne' powdercoated aluminium rods with operable panel
- \ Balustrade: Warm 'champagne' steel rods

FT-04 \ Facade Type 04: Commercial Facade Levels 1-5

- \ 200mm vertical warm 'champagne' flat louvres

FT-05 \ Facade Type 05: Fire Booster

- \ Aluminium rod screen doors to fire boosters



Check all dimensions and site conditions prior to commencement of any work, the purchase or ordering of any materials, fittings, plant, services or equipment and the preparation of shop drawings and or the fabrication of any components.

Do not scale drawings - refer to figured dimensions only. Any discrepancies shall immediately be referred to the architect for clarification.

All drawings may not be reproduced or distributed without prior permission from the architect.

10	25.01.22	Updated to address contentions
7	16.11.21	For Information
3	13.09.21	For Information
1	10.02.21	Development Application
Rev	Date	Description
		Initial
		Checked

53 Cross Street
Double Bay

Elevation West

Status	FOR INFORMATION		
Scale	1 : 100	@ A1	
Drawn	NS	Checked	MH
Project No.	S12438		
Plot Date	24/01/2022 1:11:37 PM		
BIM			

Drawing no.	Revision
A09.001	10

Melbourne 1 Nicholson Street
Melbourne VIC 3000 Australia
T 03 8664 6200 F 03 8664 6300
email mel@batesmart.com.au
http://www.batesmart.com.au

Sydney 43 Brisbane Street
Surry Hills NSW 2010 Australia
T 02 8354 5100 F 02 8354 5199
email syd@batesmart.com.au
http://www.batesmart.com.au

Bates Smart Pty Ltd ABN 70 004 999 400

BATESSMART™

- FT-01 \ Facade Type 01: Retail Facade Ground Level
- \

Vertical Columns: Polished white pigment precast concrete
- \

Horizontal Beams: Polished white pigment precast concrete
- \

Glazing: 'Crystal Grey' Double glazed unit
- \

Shopfronts: Warm 'champagne' powdercoated aluminium
- FT-02 \ Facade Type 02: Commercial Facade Levels 1-3
- \

Columns: Polished white pigment precast panels
- \

Horizontal Beams: Polished white pigment precast concrete
- \

Glazing: 'Crystal Grey' Double glazed unit
- \

Vertical Panels: Warm 'champagne' powdercoated aluminium rods with operable panel
- FT-03 \ Facade Type 03: Commercial Facade Levels 4-5
- \

Glazing: 'Crystal Grey' Double glazed unit
- \

Roof: Warm 'champagne' powdercoated aluminium rods with operable panel
- \

Balustrade: Warm 'champagne' steel rods
- FT-04 \ Facade Type 04: Commercial Facade Levels 1-5
- \

200mm vertical warm 'champagne' flat louvres



Check all dimensions and site conditions prior to commencement of any work, the purchase or ordering of any materials, fittings, plant, services or equipment and the preparation of shop drawings and or the fabrication of any components.

Do not scale drawings - refer to figured dimensions only. Any discrepancies shall immediately be referred to the architect for clarification.

All drawings may not be reproduced or distributed without prior permission from the architect.

7	16.11.21	For Information		
1	10.02.21	Development Application	Initial	Checked
Rev	Date	Description		

53 Cross Street
Double Bay

Elevation South

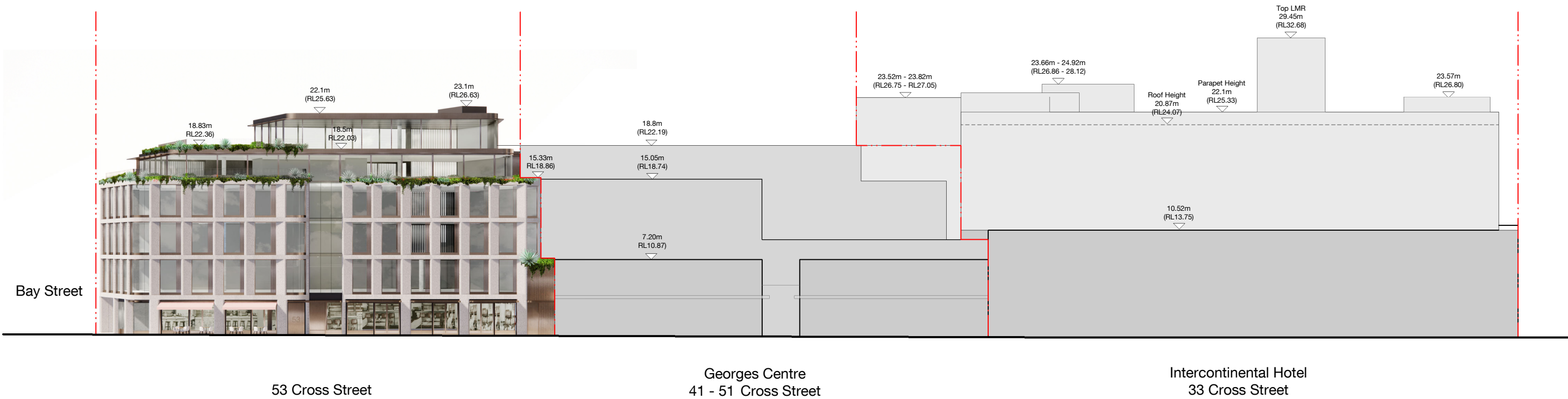
Status	FOR INFORMATION		
Scale	1 : 100	@ A1	
Drawn	NS	Checked	MH
Project No.	S12438		
Plot Date	16/11/2021 5:19:24 PM		
BIM			

Drawing no.	Revision
A09.002	7

Melbourne 1 Nicholson Street
Melbourne VIC 3000 Australia
T 03 8664 6200 F 03 8664 6300
email mel@batesmart.com.au
http://www.batesmart.com.au

Sydney 43 Brisbane Street
Surry Hills NSW 2010 Australia
T 02 8354 5100 F 02 8354 5199
email syd@batesmart.com.au
http://www.batesmart.com.au

Bates Smart Pty Ltd ABN 70 004 999 400



53 Cross Street
Double Bay

Streetscape Elevation

Revision	Date	Description	Initial	Checked
10	25.01.22	Updated to address contentions		
7	16.11.21	For Information		
3	13.08.21	For Information		
1	10.08.21	Development Application		

Check all dimensions and site conditions prior to commencement of any work, the purchase or ordering of any materials, fittings, plant, services or equipment and the preparation of shop drawings and or the fabrication of any components.
Do not scale drawings - refer to figured dimensions only. Any discrepancies shall immediately be referred to the architect for clarification.
All drawings may not be reproduced or distributed without prior permission from the architect.

Scale	1 : 200	@ A1
Drawn	MC	Checked NS
Project no.	S12438	
Status	FOR INFORMATION	
Plot Date	26/01/2022 11:15:56 AM	
BIM		
Drawing no.	A09.003	Revision 10

Melbourne 1 Nicholson Street
Melbourne VIC 3000 Australia
T 03 8664 6200 F 03 8664 6300
email mel@batesmart.com.au
http://www.batesmart.com.au

Sydney 43 Brisbane Street
Surry Hills NSW 2010 Australia
T 02 8354 5100 F 02 8354 5199
email syd@batesmart.com.au
http://www.batesmart.com.au

Bates Smart Pty Ltd ABN 70 004 999 400

BATESSMART

FT-01 \ Facade Type 01: Retail Facade Ground Level

- \ Vertical Columns: Polished white pigment precast concrete
- \ Horizontal Beams: Polished white pigment precast concrete
- \ Glazing: 'Crystal Grey' Double glazed unit
- \ Shopfronts: Warm 'champagne' powdercoated aluminium

FT-02 \ Facade Type 02: Commercial Facade Levels 1-3

- \ Columns: Polished white pigment precast panels
- \ Horizontal Beams: Polished white pigment precast concrete
- \ Glazing: 'Crystal Grey' Double glazed unit
- \ Vertical Panels: Warm 'champagne' powdercoated aluminium rods with operable panel

FT-03 \ Facade Type 03: Commercial Facade Levels 4-5

- \ Glazing: 'Crystal Grey' Double glazed unit
- \ Roof: Warm 'champagne' powdercoated aluminium rods with operable panel
- \ Balustrade: Warm 'champagne' steel rods

FT-04 \ Facade Type 04: Commercial Facade Levels 1-5

- \ 200mm vertical warm 'champagne' flat louvres



Check all dimensions and site conditions prior to commencement of any work, the purchase or ordering of any materials, fittings, plant, services or equipment and the preparation of shop drawings and or the fabrication of any components.

Do not scale drawings - refer to figured dimensions only. Any discrepancies shall immediately be referred to the architect for clarification.

All drawings may not be reproduced or distributed without prior permission from the architect.

7	16.11.21	For Information		
3	13.09.21	For Information		
Rev	Date	Description	Initial	Checked

53 Cross Street
Double Bay

North Elevation

Status	FOR INFORMATION			
Scale	1 : 100	@ A1		
Drawn	NS	Checked	NS	
Project No.	S12438			
Plot Date	23/11/2021 2:23:55 PM			
BIM				

Drawing no.	Revision
A09.004	7
Melbourne 1 Nicholson Street Melbourne VIC 3000 Australia T 03 8664 6200 F 03 8664 6300 email mel@batesmart.com.au http://www.batesmart.com.au	Sydney 43 Brisbane Street Surry Hills NSW 2010 Australia T 02 8354 5100 F 02 8354 5199 email syd@batesmart.com.au http://www.batesmart.com.au

Bates Smart Pty Ltd ABN 70 004 999 400

BATESSMART

FT-01 \ Facade Type 01: Retail Facade Ground Level

- \ Vertical Columns: Polished white pigment precast concrete
- \ Horizontal Beams: Polished white pigment precast concrete
- \ Glazing: 'Crystal Grey' Double glazed unit
- \ Shopfronts: Warm 'champagne' powdercoated aluminium

FT-02 \ Facade Type 02: Commercial Facade Levels 1-3

- \ Columns: Polished white pigment precast panels
- \ Horizontal Beams: Polished white pigment precast concrete
- \ Glazing: 'Crystal Grey' Double glazed unit
- \ Vertical Panels: Warm 'champagne' powdercoated aluminium rods with operable panel

FT-03 \ Facade Type 03: Commercial Facade Levels 4-5

- \ Glazing: 'Crystal Grey' Double glazed unit
- \ Roof: Warm 'champagne' powdercoated aluminium rods with operable panel
- \ Balustrade: Warm 'champagne' steel rods

FT-04 \ Facade Type 04: Commercial Facade Levels 1-5

- \ 200mm vertical warm 'champagne' flat louvres



Check all dimensions and site conditions prior to commencement of any work, the purchase or ordering of any materials, fittings, plant, services or equipment and the preparation of shop drawings and or the fabrication of any components.

Do not scale drawings - refer to figured dimensions only. Any discrepancies shall immediately be referred to the architect for clarification.

All drawings may not be reproduced or distributed without prior permission from the architect.

7	16.11.21	For Information		
3	13.09.21	For Information		
Rev	Date	Description	Initial	Checked

53 Cross Street
Double Bay

East Elevation

Status	FOR INFORMATION		
Scale	1 : 100	@ A1	
Drawn	NS	Checked	NS
Project No.	S12438		
Plot Date	16/11/2021 5:14:08 PM		
BIM			

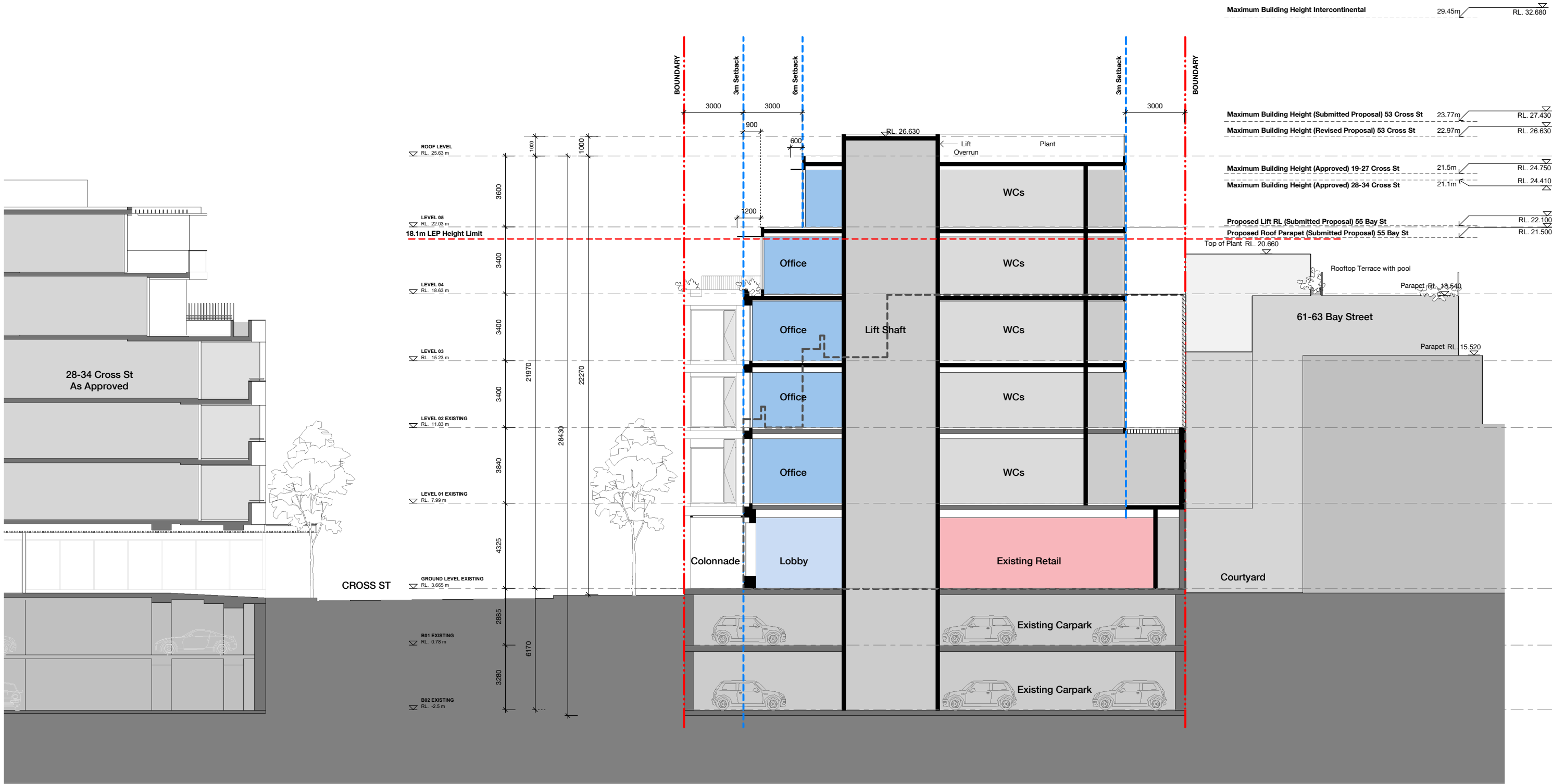
Drawing no.	Revision
A09.005	7

Melbourne 1 Nicholson Street
Melbourne VIC 3000 Australia
T 03 8664 6200 F 03 8664 6300
email mel@batesmart.com.au
http://www.batesmart.com.au

Sydney 43 Brisbane Street
Surry Hills NSW 2010 Australia
T 02 8354 5100 F 02 8354 5199
email syd@batesmart.com.au
http://www.batesmart.com.au

Bates Smart Pty Ltd ABN 70 004 999 400

BATESSMART™



53 Cross Street
Double Bay

Section A

10	25.01.22	Updated to address contentions		
7	16.11.21	For Information		
6	15.11.21	For Review		
3	13.08.21	For Information		
1	10.08.21	Development Application		
Revision	Date	Description	Initial	Checked

Check all dimensions and site conditions prior to commencement of any work, the purchase or ordering of any materials, fittings, plant, services or equipment and the preparation of shop drawings and or the fabrication of any components.

Do not scale drawings - refer to figured dimensions only. Any discrepancies shall immediately be referred to the architect for clarification.

All drawings may not be reproduced or distributed without prior permission from the architect.

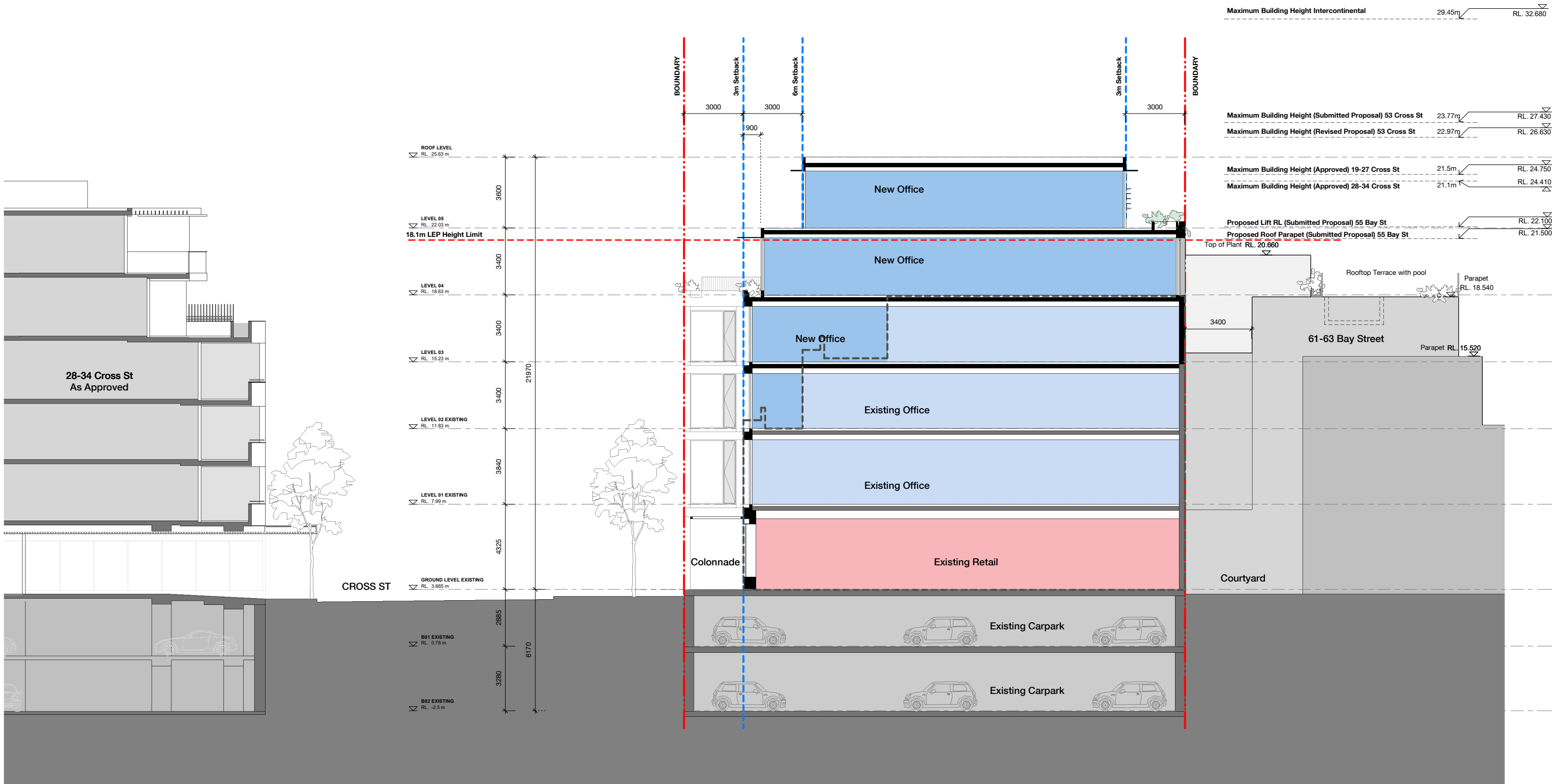
Scale	1 : 100	@ A1
Drawn	NS	Checked NS
Project no.	S12438	
Status	FOR INFORMATION	
Plot Date	24/01/2022 1:03:54 PM	
BIM		
Drawing no.	A10.001	Revision 10

Melbourne 1 Nicholson Street
Melbourne VIC 3000 Australia
T 03 8664 6200 F 03 8664 6300
email mel@batesmart.com.au
http://www.batesmart.com.au

Sydney 43 Brisbane Street
Surry Hills NSW 2010 Australia
T 02 8354 5100 F 02 8354 5199
email syd@batesmart.com.au
http://www.batesmart.com.au

Bates Smart Pty Ltd ABN 70 004 999 400

BATESSMART™



53 Cross Street
Double Bay

Section B

Check all dimensions and site conditions prior to commencement of any work, the purchase or ordering of any materials, fittings, plant, services or equipment and the preparation of shop drawings and or the fabrication of any components.
Do not scale drawings - refer to figured dimensions only. Any discrepancies shall immediately be referred to the architect for clarification.
All drawings may not be reproduced or distributed without prior permission from the architect.

Scale	1 : 100	@ A1
Drawn	NS	Checked MH
Project no.	S12438	
Status	FOR INFORMATION	
Plot Date	23/11/2021 2:39:04 PM	
BIM		
Drawing no.	A10.002	Revision 7

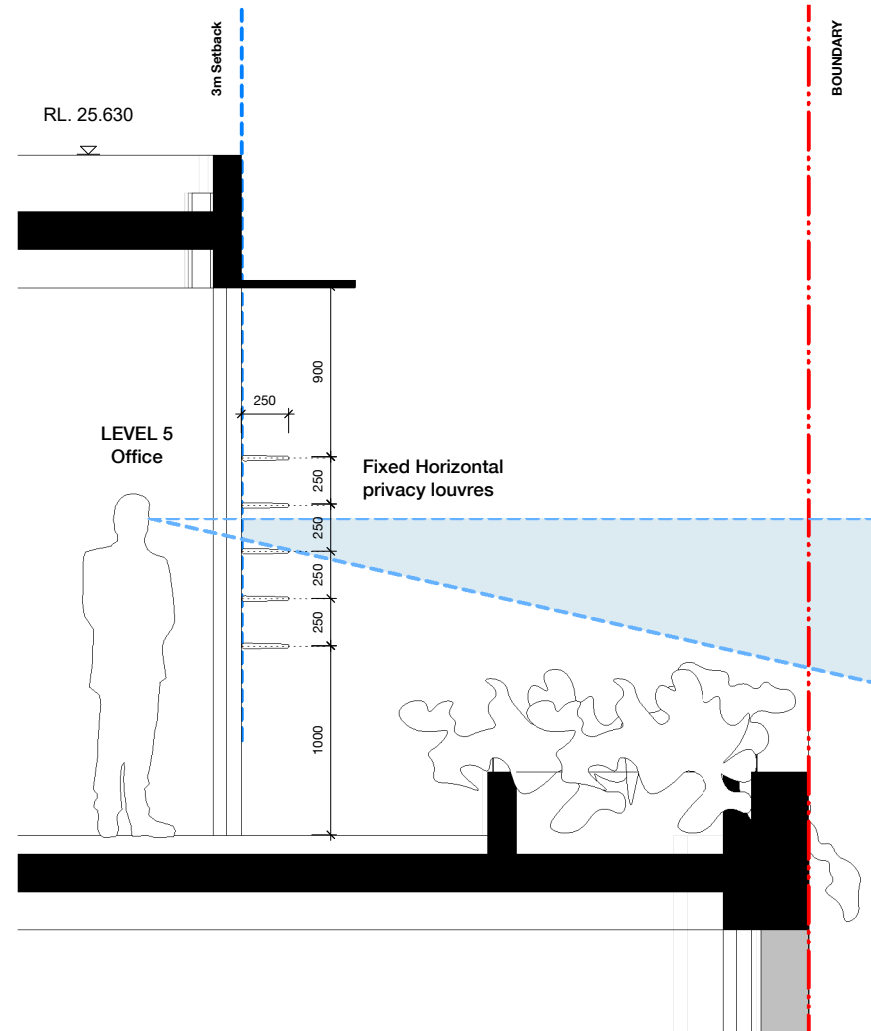
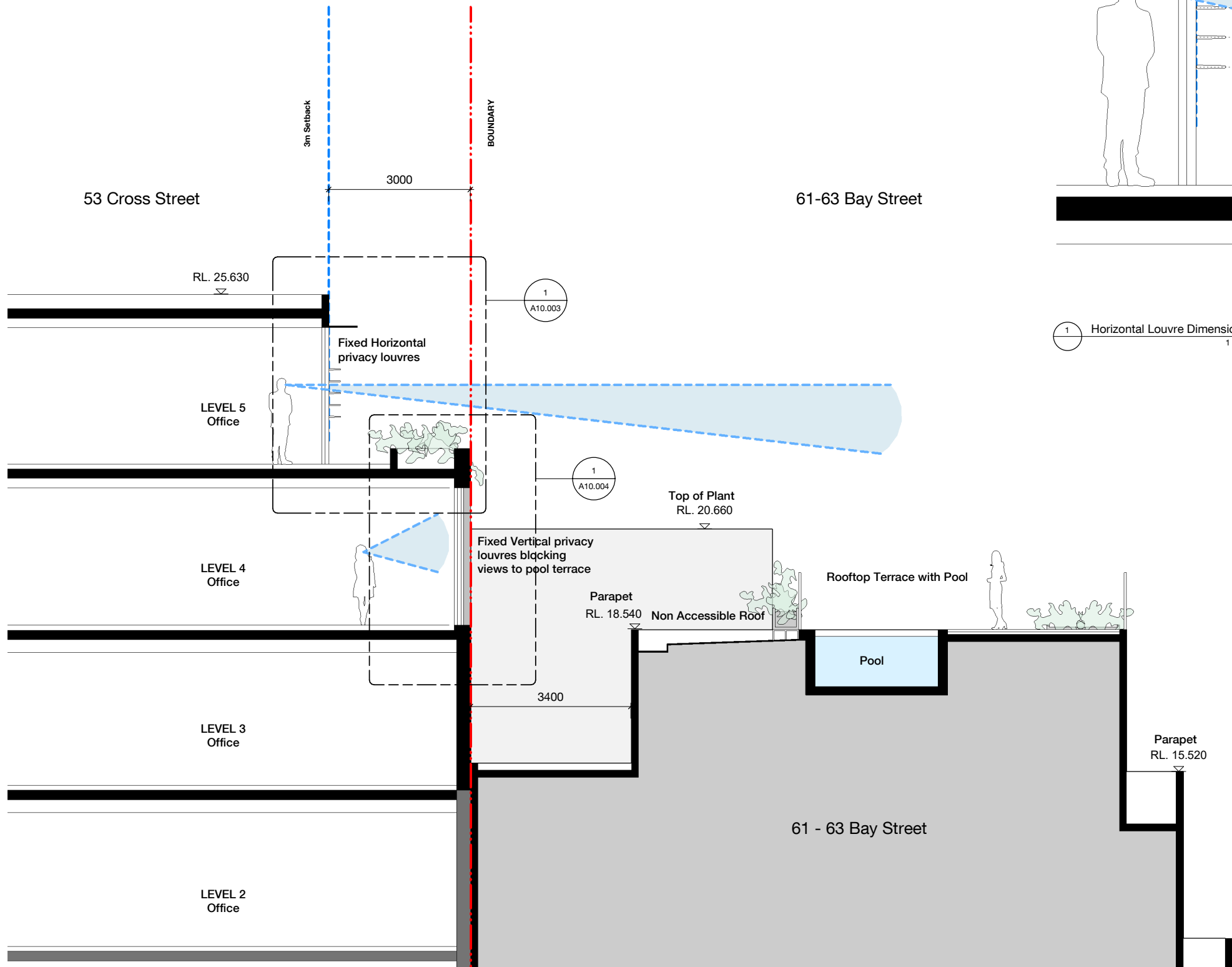
Melbourne 1 Nicholson Street
Melbourne VIC 3000 Australia
T 03 8664 6200 F 03 8664 6300
email mel@batesmart.com.au
http://www.batesmart.com.au

Sydney 43 Brisbane Street
Surry Hills NSW 2010 Australia
T 02 8354 5100 F 02 8354 5199
email syd@batesmart.com.au
http://www.batesmart.com.au

Bates Smart Pty Ltd ABN 70 004 999 400

BATESSMART™

c:\temp\53CROSSST_BS_ARCH_R2020_2am.rvt



1 Horizontal Louvre Dimensions
1 : 20

Check all dimensions and site conditions prior to commencement of any work, the purchase or ordering of any materials, fittings, plant, services or equipment and the preparation of shop drawings and or the fabrication of any components.
Do not scale drawings - refer to figured dimensions only. Any discrepancies shall immediately be referred to the architect for clarification.
All drawings may not be reproduced or distributed without prior permission from the architect.

Rev	Date	Description	Initial	Checked
7	16.11.21	For Information		

53 Cross Street Double Bay

Detail Section - Overlooking to
61-63 Bay Street

Status	FOR INFORMATION		
Scale	As indicated	@ A1	
Drawn	NS	Checked	MH
Project No.	S12438		
Plot Date	23/11/2021 5:12:50 PM		
BIM			

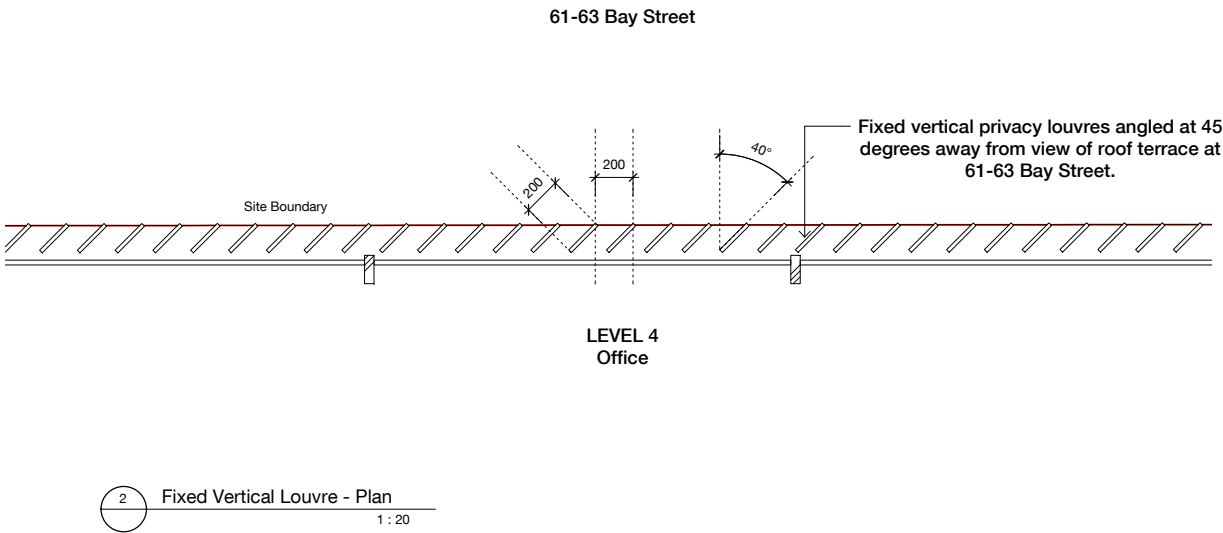
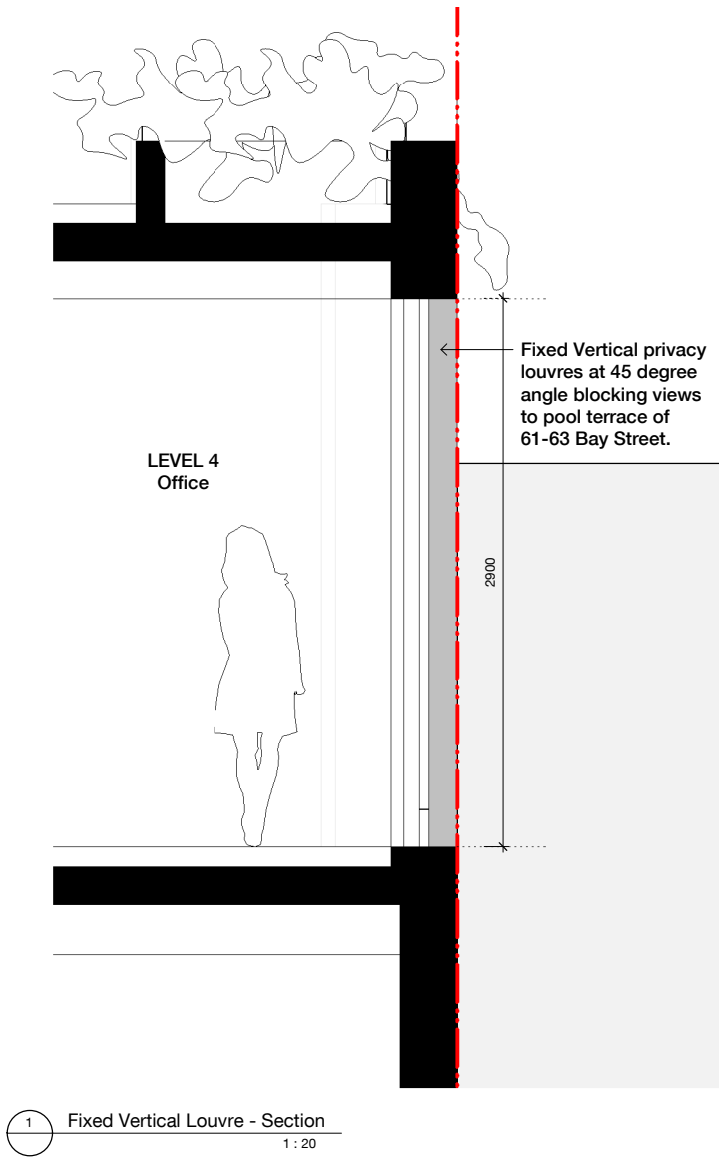
Drawing no.	Revision
A10.003	7

Melbourne 1 Nicholson Street
Melbourne VIC 3000 Australia
T 03 8664 6200 F 03 8664 6300
email mel@batesmart.com.au
http://www.batesmart.com.au

Sydney 43 Brisbane Street
Surry Hills NSW 2010 Australia
T 02 8354 5100 F 02 8354 5199
email syd@batesmart.com.au
http://www.batesmart.com.au

Bates Smart Pty Ltd ABN 70 004 999 400

BATESSMART



7	16.11.21	For Information		
Rev	Date	Description	Initial	Checked

53 Cross Street Double Bay

Fixed Vertical Louvre Details

Status	FOR INFORMATION		
Scale	1 : 20	@	A1
Drawn	Author	Checked	Checker
Project No.	S12438		
Plot Date	2/02/2022 10:00:43 AM		

BIM

Drawing no.	Revision
A10.004	7

Melbourne 1 Nicholson Street
Melbourne VIC 3000 Australia
T 03 8664 6200 F 03 8664 6300
email mel@batesmart.com.au
http://www.batesmart.com.au

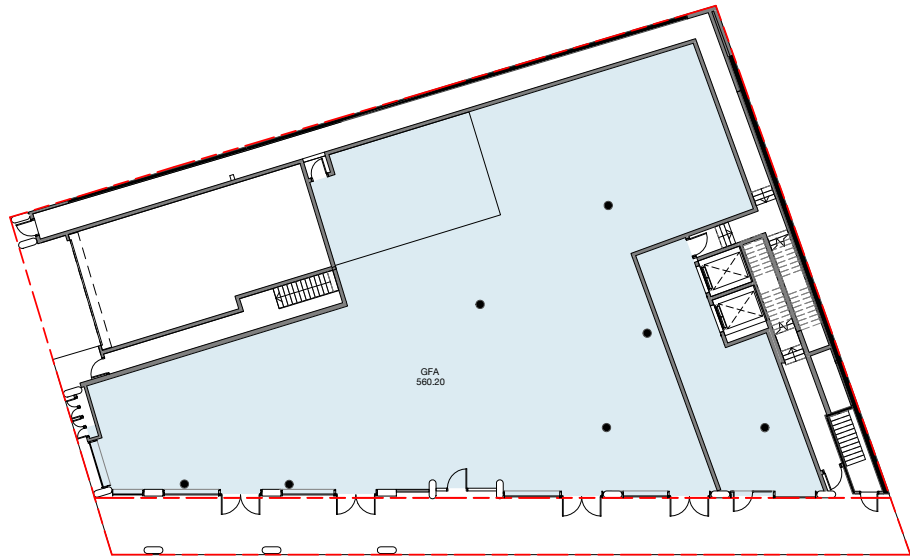
Sydney 43 Brisbane Street
Surry Hills NSW 2010 Australia
T 02 8354 5100 F 02 8354 5199
email syd@batesmart.com.au
http://www.batesmart.com.au

Bates Smart Pty Ltd ABN 70 004 999 400

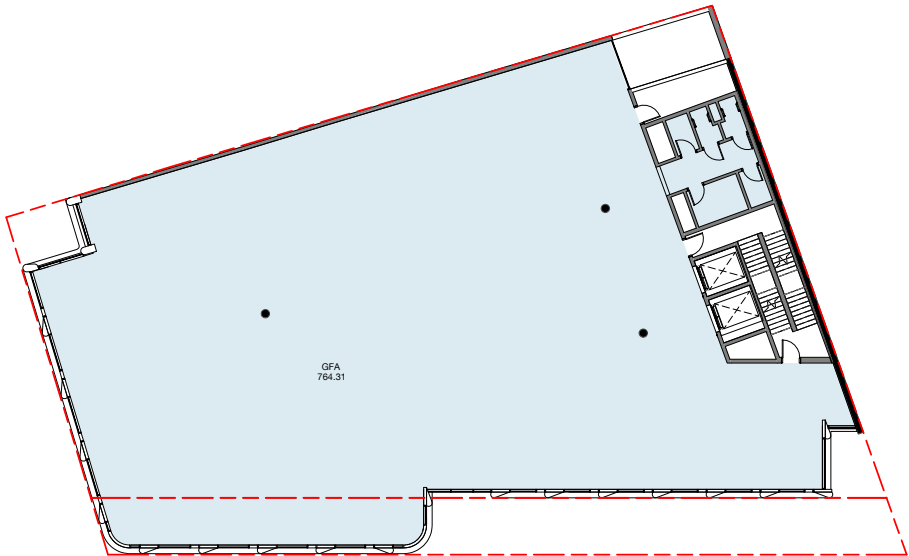
Check all dimensions and site conditions prior to commencement of any work, the purchase or ordering of any materials, fittings, plant, services or equipment and the preparation of shop drawings and or the fabrication of any components.

Do not scale drawings - refer to figured dimensions only. Any discrepancies shall immediately be referred to the architect for clarification.

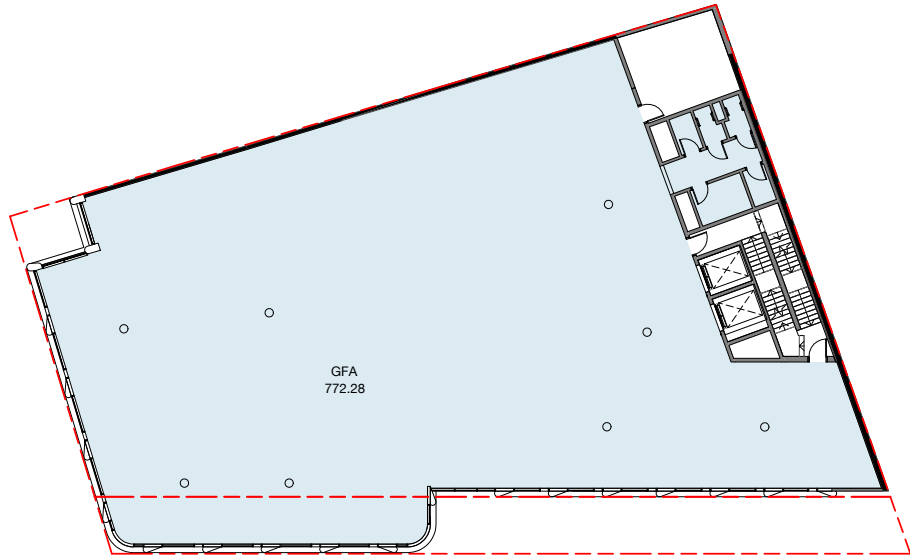
All drawings may not be reproduced or distributed without prior permission from the architect.



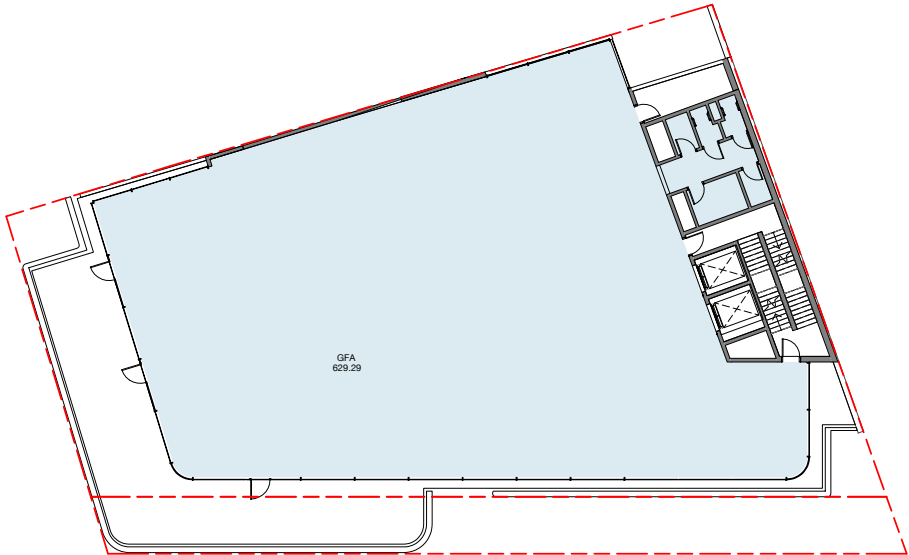
1 GROUND FLOOR 1 : 200



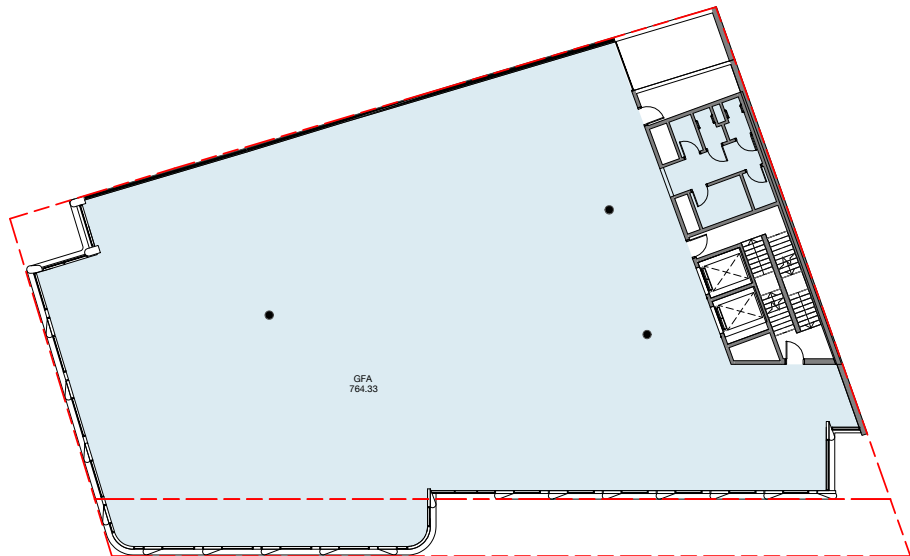
4 LEVEL 03 1 : 200



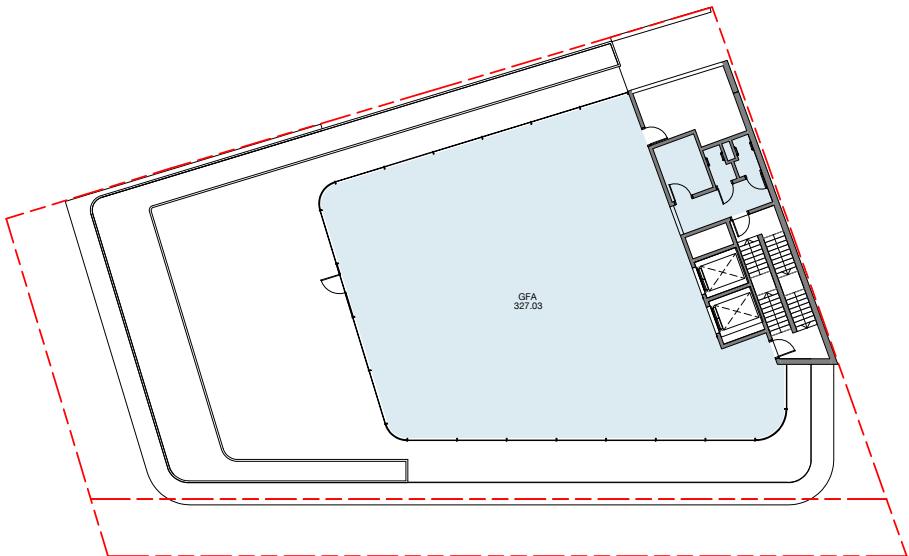
2 LEVEL 01 1 : 200



5 LEVEL 04 1 : 200



3 LEVEL 02 1 : 200



6 LEVEL 05 1 : 200

7	16.11.21	For Information			
1	10.02.21	Development Application			
Rev	Date	Description	Initial	Checked	

53 Cross Street Double Bay

A00
GFA Plan



Status	FOR INFORMATION			
Scale	1 : 200	@ A1		
Drawn	NS	Checked	MH	
Project No.	S12438			
Plot Date	2/02/2022 9:56:00 AM			
BIM				

Drawing no.	Revision
A10.007	7

Melbourne 1 Nicholson Street
Melbourne VIC 3000 Australia
T 03 8664 6200 F 03 8664 6300
email mel@batesmart.com.au
http://www.batesmart.com.au

Sydney 43 Brisbane Street
Surry Hills NSW 2010 Australia
T 02 8354 5100 F 02 8354 5199
email syd@batesmart.com.au
http://www.batesmart.com.au

Bates Smart Pty Ltd ABN 70 004 999 400

BATESSMART